



## Rabbit anti Tubulin gamma Polyclonal Antibody

Alternative Name(s): Tubulin-gamma1, 2; GCP1; MGC131994; TUBG; TUBG1, 2; Xgam

### Order Information

- **Description:** Tubulin gamma
- **Catalogue:** 500-10334
- **Lot:** See label
- **Size:** 100ug/200ul
- **Host:** Rabbit
- **Clone:** nan
- **Application:** IHC(P), WB
- **Reactivity:** Hu, Ms, Rt

### **ANTIGEN PREPARATION**

A synthetic peptide corresponding to aa 432-451 of human tubulin.

### **BACKGROUND**

Tubulin gamma, a member of the tubulin superfamily, is a ubiquitous and highly conserved protein within the microtubule organizing centre (MTOC). It is an essential structural protein for cell growth organizes microtubule arrays in the nucleus and cytoplasm. Tubulin gamma-depleted cells fail to form functional spindles and arrest during nuclear division. The phosphorylation of Tubulin gamma at Tyr445 plays a regulatory role in microtubule formation. The incidence rate for this phosphorylation event peaks during G1. The abundance of Gamma tubulin is less than 1% of the level of either alpha or beta tubulin. It shares approximately 28-32% identity with alpha tubulin from various organisms and 32-36% identity with beta tubulins. The detection, localization and characterization of proteins involved in microtubule function is fundamental to the understanding of mitosis, meiosis and the microtubule cytoskeleton. Antibodies reacting specifically with gamma tubulin serve as an essential tool in the detection of the presence and role of this molecule in various cellular settings. Gamma tubulin 1 and Gamma tubulin 2 are different isoforms that are 97% homologous.

### **PURIFICATION**

The Rabbit IgG is purified by Epitope Affinity Purification

### **FORMULATION**

This affinity purified antibody is supplied in sterile Phosphatebuffered saline (pH7.2) containing antibody stabilizer

### **SPECIFICITY**

This antibody recognizes gamma Tubulin protein. It cross-reacts to human, mouse and rat. Others are not tested.

### **STORAGE**

The antibodies are stable for 24 months from date of receipt when stored at -20oC to -70oC. The antibodies can be stored at 2oC-8oC for three month without detectable loss of activity. Avoid repeated freezing-thawing cycles.

### **APPLICATIONS/SUGGESTED WORKING DILUTIONS\***

- Western Blot: 1-5 µg/ml
- ELISA: Not tested
- Immunoprecipitation: 2-5 µg/ml
- IHC: 1-2 µg/ml
- Flow cytometry: Not tested
- Molecular Weight: 50.0

### **FOR RESEARCH USE ONLY.**

AbboMax, Inc 2528 Qume Drive, Suite 8, San Jose, California 95131, USA  
1 408-573-1898 (Tel). 1 408-573-1858 (Fax). [www.abbomax.com](http://www.abbomax.com) [info@abbomax.com](mailto:info@abbomax.com)



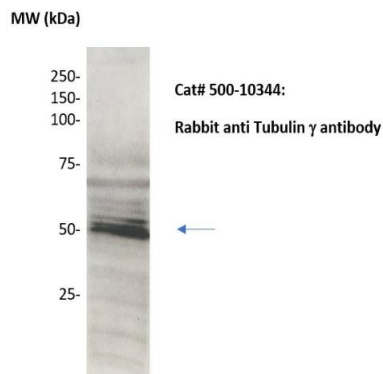
- Positive Control: Kidney Tissue
- Cellular Location: Cell Membrane

\*Optimal dilutions should be determined by researchers for the specific applications.

**FOR RESEARCH USE ONLY.**

AbboMax, Inc 2528 Qume Drive, Suite 8, San Jose, California 95131, USA  
1 408-573-1898 (Tel). 1 408-573-1858 (Fax). [www.abbomax.com](http://www.abbomax.com) [info@abbomax.com](mailto:info@abbomax.com)

## DATA ATTACHMENTS



Western Blot: The whole lysate derived from HeLa (20 ug/lane) immunoblotted by Rabbit anti – Tubulin-gamma (Cat# 500-10334) at 1:500. Observed a major immunoreactive band at molecular weight ~50 kDa.

## REFERENCES

### FOR RESEARCH USE ONLY.